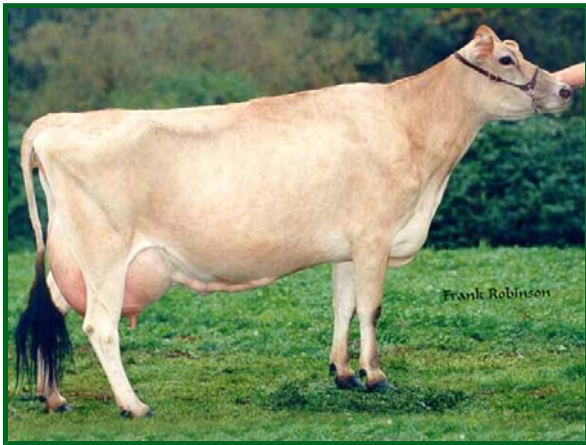




MONUMENT



Dam: Tenn Haug E Maid

MONUMENT

SUNSET CANYON MONUMENT
 Code: 147JE06050
 Born: 05/25/2001
 DMS: 234,123 aAa: 312456
 Reg. No: USA 000111981223



Sire: WALDEN FARM MR T QUEST ANGEL-ET
Dam: TENN HAUG E MAID EX-93%
 6-00 365D 26,014M 7.0% 1820F 4.3% 1107P
MGS: ISDK FYN HAUG
MGD: TENN INDEX GHD MAID VG-80%
 6-01 305D 17,180M 6.9% 1181F 4.6% 784P

USDA PTA 12/2010

TPI	31			
MILK	-118 lbs	89% R.	313 dtrs	26 herds
PROTEIN	+4 lbs	+ .04%		
FAT	+48 lbs	+ .29%		
NM\$	+142		PL	+0.9
CHEESE MERIT	+172		SCS	3.03
Daughter Fertility	-0.3		SCR	

Sire Calving Ease	%	%	Obs
Daughter Calving Ease	%	%	Obs
Sire Stillbirth	%	%	Obs
Daughter Stillbirth	%	%	Obs

Type -0.3 104 Dtrs/ 12 Herds REL 90%		-2	-1	1	2
12/2010					
PTAT	-0.3				
Stature	+1.5 Tall				
Strength	+0.5 Strong				
Dairy Form	-0.1 Tight				
Rump Angle	+0.8 Sloped				
Thurl Width	+0.4 Wide				
R. Legs-S View	+0.1 Sickle				
Foot Angle	+0.1 Steep				
F. Udder Att.	-0.6 Loose				
R. Udder Ht.	-0.6 Low				
R. Udder Wid.	-0.5 Narrow				
Udder Cleft	+0.0 Strong				
Udder Depth	-0.1 Deep				
F. Teat Place	-0.7 Wide				
Teat Length	+1.2 Long				



SUMMIT

SUMMIT

JENKS PARAMOUNT SUMMIT

Code: 147JE06063

Born: 10/12/2001

DMS: 345,234 aAa: 546321

Reg. No: USA 000112505219



Sire: ROCK ELLA PARAMOUNT-ET

Dam: JENKS BOLD TARA-ET EX-90%

4-11 293D 3X 26,450M 4.3% 1140F 3.1% 817P

MGS: MVF BOLD VENTURE DANIEL

MGD: JENKS LESTER TWILA EX-91%

2-10 305D 2X 19,530M 4.6% 894F 3.7% 722P

USDA PTA 12/2010

TPI	116			
MILK	+548 lbs	91% R.	126 dtrs	37 herds
PROTEIN	+15 lbs	-.02%		
FAT	+39 lbs	+.07%		
NM\$	+374		PL	+4.4
CHEESE MERIT	+374		SCS	2.95
Daughter Fertility	+1.3		SCR	-5.3

Sire Calving Ease % % Obs

Daughter Calving Ease % % Obs

Sire Stillbirth % % Obs

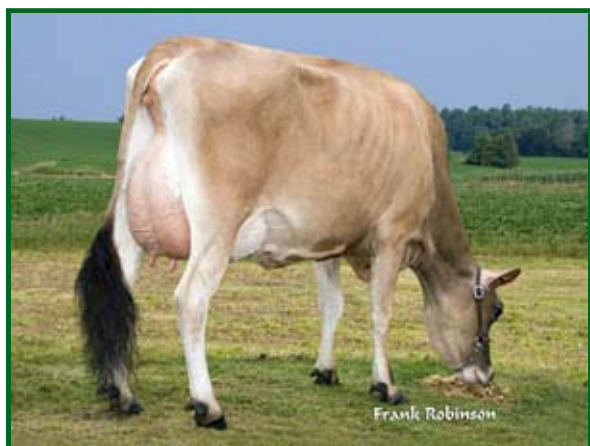
Daughter Stillbirth % % Obs



Jenks Summit Melody VG

Type +0.5 78 Dtrs/ 16 Herds REL 89%

12/2010			-2	-1	1	2
PTAT	+0.5					
Stature	+0.0	Tall				
Strength	-0.3	Frail				
Dairy Form	+0.6	Open				
Rump Angle	-0.7	High Pins				
Thurl Width	-0.4	Narrow				
R. Legs-S View	+0.5	Sickle				
Foot Angle	-0.1	Low				
F. Udder Att.	-0.2	Loose				
R. Udder Ht.	+0.8	High				
R. Udder Wid.	+0.6	Wide				
Udder Cleft	+1.2	Strong				
Udder Depth	+0.2	Shallow				
F. Teat Place	-0.3	Wide				
Teat Length	+0.8	Long				



Jenks Summit Melody VG



HERO



Dam: Ahlem Barber Tiffany 6200



Full Sister: Ahlem Hallmark Tiffany EX-91

HERO

AHLEM HALLMARKS HERO

Code: 147JE06067

Born: 04/06/2002

DMS: 345 aAa: 462

Reg. No: USA 000112821168



Sire: SCHULTZ BROOK HALLMARK

Dam: AHLEM BARBER TIFFANY 6200 EX-93%
4-05 305D 2X 26,030M 3.9% 1004F 3.4% 893P

MGS: WF/L&M DUNCAN BARBER-ET

MGD: AHLEM BERRETTA TIFFANY EX-91%
5-03 305D 2X 26,410M 3.8% 1009F 3.6% 961P

USDA PTA 12/2010

TPI	105			
MILK	+841 lbs	88% R.	96 dtrs	19 herds
PROTEIN	+22 lbs	-.04%		
FAT	+25 lbs	-.07%		
NM\$	+274		PL	+2.4
CHEESE MERIT	+275		SCS	2.82
Daughter Fertility	-0.1		SCR	

Sire Calving Ease	%	%	Obs
Daughter Calving Ease	%	%	Obs
Sire Stillbirth	%	%	Obs
Daughter Stillbirth	%	%	Obs

Type +0.7 68 Dtrs/ 11 Herds REL 88%

12/2010		-2	-1	1	2
PTAT	+0.7				
Stature	+0.6 Tall				
Strength	-0.7 Frail				
Dairy Form	+0.9 Open				
Rump Angle	+0.5 Sloped				
Thurl Width	-0.8 Narrow				
R. Legs-S View	+0.3 Sickle				
Foot Angle	-0.3 Low				
F. Udder Att.	-0.1 Loose				
R. Udder Ht.	+0.6 High				
R. Udder Wid.	+0.5 Wide				
Udder Cleft	+0.6 Strong				
Udder Depth	+0.7 Shallow				
F. Teat Place	+1.3 Close				
Teat Length	-0.2 Short				



SENTRY

SENTRY

AHLEM JACE SENTRY-ET
 Code: 147JE06173
 Born: 05/09/2004
 DMS: 246 aAa: 615243
 Reg. No: USA 000113978377



Sire: WINDY WILLOW MONTANA JACE
Dam: AHLEM BSB PRINCESS 6112 EX-93%
 4-05 305D 2X 26,850M 4.9% 1310F 3.7% 996P
MGS: MASON BOOMER SOONER BERRETTA
MGD: AHLEM GLANWOOD COMM PRINCESS EX-92%
 5-06 305D 2X 27,150M 4.1% 1111F 3.6% 981P

USDA PTA 12/2010

TPI	126			
MILK	+439 lbs	79% R.	16 dtrs	1 herds
PROTEIN	+20 lbs	+ .02%		
FAT	+21 lbs	+ .00%		
NM\$	+357		PL	+4.5
CHEESE MERIT	+398		SCS	2.77
Daughter Fertility	-0.6		SCR	

Sire Calving Ease	%	%	Obs
Daughter Calving Ease	%	%	Obs
Sire Stillbirth	%	%	Obs
Daughter Stillbirth	%	%	Obs

Type +1.6 15 Dtrs/ 1 Herds REL 78%

12/2010			-2	-1	1	2
PTAT	+1.6					
Stature	+1.5	Tall				
Strength	+0.2	Strong				
Dairy Form	+0.9	Open				
Rump Angle	-0.7	High Pins				
Thurl Width	+0.5	Wide				
R. Legs-S View	-0.7	Posty				
Foot Angle	+1.6	Steep				
F. Udder Att.	+1.4	Strong				
R. Udder Ht.	+1.4	High				
R. Udder Wid.	+1.1	Wide				
Udder Cleft	+1.3	Strong				
Udder Depth	+1.7	Shallow				
F. Teat Place	+1.3	Close				
Teat Length	+0.8	Long				



BLITZEN



Dam: Barham Ad Gold Blackie

BLITZEN

BARHAM MAXIMUS BLITZEN

Code: 147JE06183

Born: 07/24/2008

DMS: 345 aAa: 561

Reg. No: USA 000116256694



Sire: SUNSET CANYON MAXIMUS-ET

Dam: BARHAM AD GOLD BLACKIE

MGS: AD GOLD

MGD: JACK MELVIN ROSIE

USDA PTA 12/2010				
TPI	172			
MILK	+666 lbs	62% R.	dtrs	herds
PROTEIN	+35 lbs	+.07%		
FAT	+84 lbs	+.29%		
NM\$	+500		PL	+2.7
CHEESE MERIT	+574		SCS	2.83
Daughter Fertility	-0.1		SCR	
Sire Calving Ease		%	%	Obs
Daughter Calving Ease		%	%	Obs
Sire Stillbirth		%	%	Obs
Daughter Stillbirth		%	%	Obs

PA TYPE +0.6 0 Dtrs/ 0 Herds REL 56%					
12/2010		-2	-1	1	2
PTAT	+0.6				
Stature	+0.2 Tall				
Strength	+0.5 Strong				
Dairy Form	+0.5 Open				
Rump Angle	-0.2 High Pins				
Thurl Width	+0.1 Wide				
R. Legs-S View	-0.1 Posty				
Foot Angle	+0.8 Steep				
F. Udder Att.	+0.7 Strong				
R. Udder Ht.	+0.4 High				
R. Udder Wid.	+0.3 Wide				
Udder Cleft	+0.2 Strong				
Udder Depth	+0.6 Shallow				
F. Teat Place	+0.4 Close				
Teat Length	+0.2 Long				



BRANSON



BRANSON

BRANSON

GABYS TBONE BRANSON-ET

Code: 147JE06185

Born: 06/01/2009

DMS: 234,123 aAa: 354

Reg. No: USA 000116697813



Sire: RICHIES JACE TBONE A364

Dam: GABYS ACTION BABY-ET

MGS: FOREST GLEN AVERY ACTION-ET

MGD: GABYS LEMVIG BARBIE EX-92

2-10 305D 2X 19,470M 5.4% 1042F 3.8% 734P

USDA PTA 12/2010				
TPI	132			
MILK	+198 lbs	68% R.	dtrs	herds
PROTEIN	+17 lbs	+.05%		
FAT	+36 lbs	+.15%		
NM\$	+346		PL	+3.8
CHEESE MERIT	+395		SCS	2.92
Daughter Fertility	+0.2		SCR	
Sire Calving Ease		%	%	Obs
Daughter Calving Ease		%	%	Obs
Sire Stillbirth		%	%	Obs
Daughter Stillbirth		%	%	Obs

PA TYPE +1.8 0 Dtrs/ 0 Herds REL 62%					
12/2010		-2	-1	1	2
PTAT	+1.8				
Stature	+1.5 Tall				
Strength	+0.6 Strong				
Dairy Form	+1.2 Open				
Rump Angle	+0.5 Sloped				
Thurl Width	+0.6 Wide				
R. Legs-S View	+0.7 Sickle				
Foot Angle	+1.1 Steep				
F. Udder Att.	+2.1 Strong				
R. Udder Ht.	+1.6 High				
R. Udder Wid.	+1.3 Wide				
Udder Cleft	+1.0 Strong				
Udder Depth	+2.3 Shallow				
F. Teat Place	+2.1 Close				
Teat Length	+0.2 Long				



BANKER



BANKER

BANKER

GABYS DALE BANKER-ET

Code: 147JE06186

Born: 06/02/2009

DMS: 345,234 aAa: 531

Reg. No: USA 000116697859



Sire: PR OOMSDALE JACE GRATITUDE GARDEN-ET

Dam: GABYS ACTION BABY-ET

MGS: FOREST GLEN AVERY ACTION-ET

MGD: GABYS LEMVIG BARBIE EX-92

2-10 305D 2X 19,470M 5.4% 1042F 3.8% 734P

USDA PTA 12/2010				
TPI	128			
MILK	+737 lbs	65% R.	dtrs	herds
PROTEIN	+24 lbs	-.01%		
FAT	+44 lbs	+.07%		
NM\$	+365		PL	+4.0
CHEESE MERIT	+380		SCS	2.89
Daughter Fertility	-0.4		SCR	
Sire Calving Ease		%	%	Obs
Daughter Calving Ease		%	%	Obs
Sire Stillbirth		%	%	Obs
Daughter Stillbirth		%	%	Obs

PA TYPE +1.4 0 Dtrs/ 0 Herds REL 58%					
12/2010		-2	-1	1	2
PTAT	+1.4				
Stature	+1.3 Tall				
Strength	+1.4 Strong				
Dairy Form	+1.2 Open				
Rump Angle	-0.1 High Pins				
Thurl Width	+1.1 Wide				
R. Legs-S View	+0.0 Sickle				
Foot Angle	+0.9 Steep				
F. Udder Att.	+1.2 Strong				
R. Udder Ht.	+1.6 High				
R. Udder Wid.	+1.3 Wide				
Udder Cleft	+0.9 Strong				
Udder Depth	+0.2 Shallow				
F. Teat Place	+0.6 Close				
Teat Length	+0.9 Long				



DONOVAN



DONOVAN

DONOVAN

GABYS DALE DONOVAN-ET 516

Code: 147JE06187

Born: 06/03/2009

DMS: 345,135 aAa: 516

Reg. No: USA 000116697868



Sire: PR OOMSDALE JACE GRATITUDE GARDEN-ET

Dam: GABYS ACTION BABY-ET

MGS: FOREST GLEN AVERY ACTION-ET

MGD: GABYS LEMVIG BARBIE EX-92

2-10 305D 2X 19,470M 5.4% 1042F 3.8% 734P

USDA PTA 12/2010				
TPI	180			
MILK	+1079 lbs	60% R.	dtrs	herds
PROTEIN	+40 lbs	+ .02%		
FAT	+56 lbs	+ .07%		
NM\$	+471		PL	+4.2
CHEESE MERIT	+513		SCS	2.87
Daughter Fertility	-0.2		SCR	
Sire Calving Ease		%	%	Obs
Daughter Calving Ease		%	%	Obs
Sire Stillbirth		%	%	Obs
Daughter Stillbirth		%	%	Obs

PA TYPE +0.9 0 Dtrs/ 0 Herds REL 54%					
12/2010		-2	-1	1	2
PTAT	+0.9				
Stature	+0.3 Tall				
Strength	+0.8 Strong				
Dairy Form	+0.7 Open				
Rump Angle	+0.2 Sloped				
Thurl Width	+0.6 Wide				
R. Legs-S View	+0.3 Sickle				
Foot Angle	+0.3 Steep				
F. Udder Att.	+0.4 Strong				
R. Udder Ht.	+1.3 High				
R. Udder Wid.	+1.0 Wide				
Udder Cleft	+1.0 Strong				
Udder Depth	+0.1 Shallow				
F. Teat Place	+0.1 Close				
Teat Length	+0.8 Long				