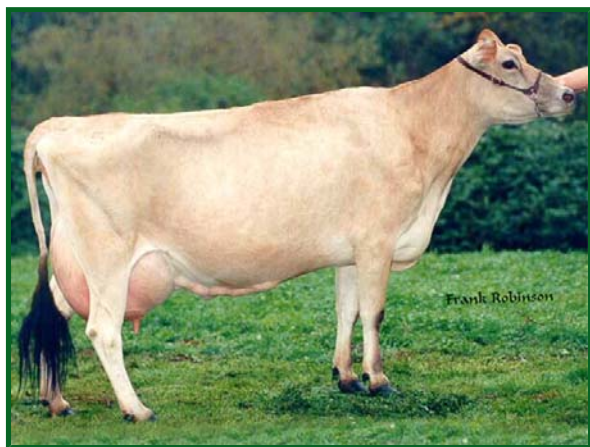




MONUMENT



Dam: Tenn Haug E Maid

MONUMENT

SUNSET CANYON MONUMENT

Code: 147JE06050

Born: 05/25/2001

DMS: 234,123 aAa: 312456

Reg. No: USA 000111981223



Sire: WALDEN FARM MR T QUEST ANGEL-ET

Dam: TENN HAUG E MAID EX-93%

6-00 365D 26,014M 7.0% 1820F 4.3% 1107P

MGS: ISDK FYN HAUG

MGD: TENN INDEX GHD MAID VG-80%

6-01 305D 17,180M 6.9% 1181F 4.6% 784P

USDA PTA 04/2010

| | | | | |
|---------------------------|-----------|--------|------------|----------|
| TPI | 31 | | | |
| MILK | -162 lbs | 89% R. | 304 dtrs | 24 herds |
| PROTEIN | +3 lbs | + .05% | | |
| FAT | +48 lbs | + .30% | | |
| NM\$ | +144 | | PL | +0.8 |
| CHEESE MERIT | +175 | | SCS | 3.02 |
| Daughter Fertility | +0.1 | | SCR | |

| | | | |
|------------------------------|---|---|-----|
| Sire Calving Ease | % | % | Obs |
| Daughter Calving Ease | % | % | Obs |
| Sire Stillbirth | % | % | Obs |
| Daughter Stillbirth | % | % | Obs |

Type -0.4 102 Dtrs/ 11 Herds REL 89%

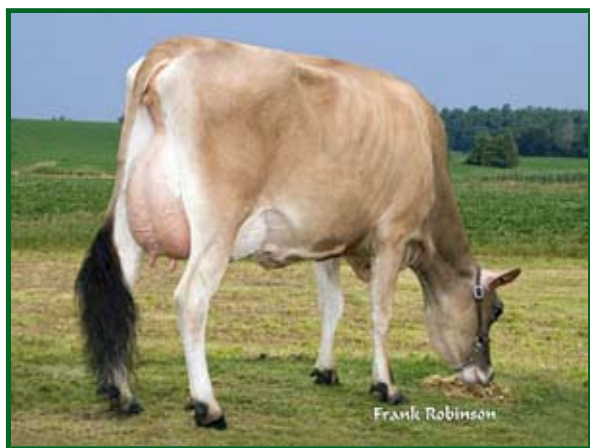
| 04/2010 | | -2 | -1 | 1 | 2 |
|----------------|--------------|----|----|---|---|
| PTAT | -0.4 | | | | |
| Stature | +1.6 Tall | | | | |
| Strength | +0.6 Strong | | | | |
| Dairy Form | -0.2 Tight | | | | |
| Rump Angle | +0.8 Sloped | | | | |
| Thurl Width | +0.4 Wide | | | | |
| R. Legs-S View | +0.2 Sickle | | | | |
| Foot Angle | +0.0 Steep | | | | |
| F. Udder Att. | -0.6 Loose | | | | |
| R. Udder Ht. | -0.6 Low | | | | |
| R. Udder Wid. | -0.8 Narrow | | | | |
| Udder Cleft | +0.1 Strong | | | | |
| Udder Depth | +0.0 Shallow | | | | |
| F. Teat Place | -0.7 Wide | | | | |
| Teat Length | +1.4 Long | | | | |



SUMMIT



Jenks Summit Melody VG



Jenks Summit Melody VG

SUMMIT

JENKS PARAMOUNT SUMMIT

Code: 147JE06063

Born: 10/12/2001

DMS: 345,234 aAa: 546321

Reg. No: USA 000112505219



Sire: ROCK ELLA PARAMOUNT-ET

Dam: JENKS BOLD TARA-ET EX-90%

4-11 293D 3X 26,450M 4.3% 1140F 3.1% 817P

MGS: MVF BOLD VENTURE DANIEL

MGD: JENKS LESTER TWILA EX-91%

2-10 305D 2X 19,530M 4.6% 894F 3.7% 722P

USDA PTA 04/2010

| | | | | |
|---------------------------|------------|--------|------------|----------|
| TPI | 123 | | | |
| MILK | +521 lbs | 89% R. | 83 dtrs | 21 herds |
| PROTEIN | +16 lbs | -.01% | | |
| FAT | +44 lbs | +.11% | | |
| NM\$ | +416 | | PL | +4.7 |
| CHEESE MERIT | +424 | | SCS | 2.88 |
| Daughter Fertility | +1.2 | | SCR | -3.6 |

| | | | |
|------------------------------|---|---|-----|
| Sire Calving Ease | % | % | Obs |
| Daughter Calving Ease | % | % | Obs |
| Sire Stillbirth | % | % | Obs |
| Daughter Stillbirth | % | % | Obs |

Type +0.5 58 Dtrs/ 9 Herds REL 87%

| 04/2010 | | -2 | -1 | 1 | 2 |
|----------------|--------------|----|----|---|---|
| PTAT | +0.5 | | | | |
| Stature | -0.4 Short | | | | |
| Strength | -0.4 Frail | | | | |
| Dairy Form | +0.6 Open | | | | |
| Rump Angle | -1 High Pins | | | | |
| Thurl Width | -0.6 Narrow | | | | |
| R. Legs-S View | +0.4 Sickle | | | | |
| Foot Angle | -0.1 Low | | | | |
| F. Udder Att. | -0.2 Loose | | | | |
| R. Udder Ht. | +0.8 High | | | | |
| R. Udder Wid. | +0.1 Wide | | | | |
| Udder Cleft | +1.2 Strong | | | | |
| Udder Depth | +0.1 Shallow | | | | |
| F. Teat Place | -0.3 Wide | | | | |
| Teat Length | +0.9 Long | | | | |



HERO



Dam: Ahlem Barber Tiffany 6200

HERO

AHLEM HALLMARKS HERO

Code: 147JE06067

Born: 04/06/2002

DMS: 345 aAa: 462

Reg. No: USA 000112821168



Sire: SCHULTZ BROOK HALLMARK

Dam: AHLEM BARBER TIFFANY 6200 EX-93%
4-05 305D 2X 26,030M 3.9% 1004F 3.4% 893P

MGS: WF/L&M DUNCAN BARBER-ET

MGD: AHLEM BERRETTA TIFFANY EX-91%

5-03 305D 2X 26,410M 3.8% 1009F 3.6% 961P

| USDA PTA 04/2010 | | | | |
|------------------------------|------------|--------|------------|----------|
| TPI | 107 | | | |
| MILK | +860 lbs | 88% R. | 89 dtrs | 19 herds |
| PROTEIN | +23 lbs | -.04% | | |
| FAT | +24 lbs | -.08% | | |
| NM\$ | +266 | | PL | +2.2 |
| CHEESE MERIT | +265 | | SCS | 2.88 |
| Daughter Fertility | -0.1 | | SCR | |
| Sire Calving Ease | | % | % | Obs |
| Daughter Calving Ease | | % | % | Obs |
| Sire Stillbirth | | % | % | Obs |
| Daughter Stillbirth | | % | % | Obs |

| Type +0.9 62 Dtrs/ 11 Herds REL 86% | | | | | |
|-------------------------------------|--------------|----|----|---|---|
| 04/2010 | | -2 | -1 | 1 | 2 |
| PTAT | +0.9 | | | | |
| Stature | +0.5 Tall | | | | |
| Strength | -0.7 Frail | | | | |
| Dairy Form | +0.8 Open | | | | |
| Rump Angle | +0.2 Sloped | | | | |
| Thurl Width | -0.8 Narrow | | | | |
| R. Legs-S View | +0.4 Sickle | | | | |
| Foot Angle | -0.2 Low | | | | |
| F. Udder Att. | +0.3 Strong | | | | |
| R. Udder Ht. | +0.8 High | | | | |
| R. Udder Wid. | +0.7 Wide | | | | |
| Udder Cleft | +0.4 Strong | | | | |
| Udder Depth | +1.1 Shallow | | | | |
| F. Teat Place | +1.4 Close | | | | |
| Teat Length | -0.3 Short | | | | |



QUENTON



Jenks Quenton Mary



Quenton Daughters at Jenks

QUENTON

JENKS CENTURION QUENTON

Code: 147JE06081

Born: 01/08/2004

DMS: 345,135 aAa: 243

Reg. No: USA 000114409555



Sire: SOONER CENTURION-ET

Dam: JENKS BOLD VENTURE MARIANNE-ET EX-94%

4-02 302D 3X 23,460M 4.9% 1149F 3.5% 825P

MGS: MVF BOLD VENTURE DANIEL

MGD: JENKS BERRETTA MARY MAE EX-90%

5-02 305D 2X 19,180M 4.5% 864F 3.8% 731P

USDA PTA 04/2010

| | | | | |
|---------------------------|------------|--------|------------|----------|
| TPI | -41 | | | |
| MILK | -722 lbs | 87% R. | 344 dtrs | 16 herds |
| PROTEIN | -17 lbs | +.05% | | |
| FAT | -8 lbs | +.14% | | |
| NM\$ | -78 | | PL | +0.3 |
| CHEESE MERIT | -61 | | SCS | 3.26 |
| Daughter Fertility | -0.4 | | SCR | 1.5 |

| | | | |
|------------------------------|---|---|-----|
| Sire Calving Ease | % | % | Obs |
| Daughter Calving Ease | % | % | Obs |
| Sire Stillbirth | % | % | Obs |
| Daughter Stillbirth | % | % | Obs |

Type +1.2 137 Dtrs/ 8 Herds REL 90%

| 04/2010 | | -2 | -1 | 1 | 2 |
|----------------|----------------|----|----|---|---|
| PTAT | +1.2 | | | | |
| Stature | -1.3 Short | | | | |
| Strength | -0.7 Frail | | | | |
| Dairy Form | +1.2 Open | | | | |
| Rump Angle | -0.7 High Pins | | | | |
| Thurl Width | -0.4 Narrow | | | | |
| R. Legs-S View | +0.1 Sickle | | | | |
| Foot Angle | +0.5 Steep | | | | |
| F. Udder Att. | +1.3 Strong | | | | |
| R. Udder Ht. | +1.4 High | | | | |
| R. Udder Wid. | +1.1 Wide | | | | |
| Udder Cleft | -0.4 Weak | | | | |
| Udder Depth | +0.4 Shallow | | | | |
| F. Teat Place | +0.9 Close | | | | |
| Teat Length | -0.5 Short | | | | |



LINCOLN

PRAIRIE HARBOUR LINCOLN

Code: 147JE06170

Born: 03/09/2009

DMS: 135 aAa: 132

Reg. No: USA 000067000902



Sire: BW SEVILLE

Dam: PRAIRIE HARBOUR AVERY LADYBUG

MGS: BANCREST LESTER AVERY

MGD: STAHELIS CENTURION LISA

USDA PTA 04/2010

| | | | | |
|---------------------------|-----------|--------|------------|-------|
| TPI | 68 | | | |
| MILK | +398 lbs | 71% R. | dtrs | herds |
| PROTEIN | +10 lbs | -.02% | | |
| FAT | +11 lbs | -.04% | | |
| NM\$ | +144 | | PL | +1.5 |
| CHEESE MERIT | +139 | | SCS | 2.97 |
| Daughter Fertility | -0.6 | | SCR | |

| | | | |
|------------------------------|---|---|-----|
| Sire Calving Ease | % | % | Obs |
| Daughter Calving Ease | % | % | Obs |
| Sire Stillbirth | % | % | Obs |
| Daughter Stillbirth | % | % | Obs |

PA TYPE +1.7 0 Dtrs/ 0 Herds REL 56%

| 04/2010 | | | -2 | -1 | 1 | 2 |
|----------------|------|---------|----|----|---|---|
| PTAT | +1.7 | | | | | |
| Stature | +0.7 | Tall | | | | |
| Strength | +0.2 | Strong | | | | |
| Dairy Form | +1.1 | Open | | | | |
| Rump Angle | +0.3 | Sloped | | | | |
| Thurl Width | +0.0 | Wide | | | | |
| R. Legs-S View | +0.4 | Sickle | | | | |
| Foot Angle | +0.3 | Steep | | | | |
| F. Udder Att. | +1.7 | Strong | | | | |
| R. Udder Ht. | +2.3 | High | | | | |
| R. Udder Wid. | +1.3 | Wide | | | | |
| Udder Cleft | +1.0 | Strong | | | | |
| Udder Depth | +1.4 | Shallow | | | | |
| F. Teat Place | +0.8 | Close | | | | |
| Teat Length | -0.5 | Short | | | | |



SENTRY

AHLEM JACE SENTRY-ET

Code: 147JE06173

Born: 05/09/2004

DMS: aAa:

Reg. No: USA 000113978377



Sire: WINDY WILLOW MONTANA JACE
Dam: AHLEM BSB PRINCESS 6112 EX-93%
 4-05 305D 2X 26,850M 4.9% 1310F 3.7% 996P
MGS: MASON BOOMER SOONER BERRETTA
MGD: AHLEM GLANWOOD COMM PRINCESS EX-92%
 5-06 305D 2X 27,150M 4.1% 1111F 3.6% 981P

USDA PTA 04/2010

| | | | | |
|---------------------------|------------|--------|------------|---------|
| TPI | 107 | | | |
| MILK | +558 lbs | 80% R. | 13 dtrs | 1 herds |
| PROTEIN | +19 lbs | + .00% | | |
| FAT | +21 lbs | - .02% | | |
| NM\$ | +307 | | PL | +3.3 |
| CHEESE MERIT | +328 | | SCS | 2.79 |
| Daughter Fertility | -0.6 | | SCR | |

| | | | |
|------------------------------|---|---|-----|
| Sire Calving Ease | % | % | Obs |
| Daughter Calving Ease | % | % | Obs |
| Sire Stillbirth | % | % | Obs |
| Daughter Stillbirth | % | % | Obs |

Type +1.4 12 Dtrs/ 1 Herds REL 75%

| 04/2010 | | | -2 | -1 | 1 | 2 |
|----------------|------|-----------|----|----|---|---|
| PTAT | +1.4 | | | | | |
| Stature | +0.9 | Tall | | | | |
| Strength | -0.1 | Frail | | | | |
| Dairy Form | +0.6 | Open | | | | |
| Rump Angle | -0.7 | High Pins | | | | |
| Thurl Width | +0.2 | Wide | | | | |
| R. Legs-S View | -0.5 | Posty | | | | |
| Foot Angle | +1.3 | Steep | | | | |
| F. Udder Att. | +1.1 | Strong | | | | |
| R. Udder Ht. | +1.1 | High | | | | |
| R. Udder Wid. | +0.4 | Wide | | | | |
| Udder Cleft | +1.0 | Strong | | | | |
| Udder Depth | +1.2 | Shallow | | | | |
| F. Teat Place | +1.2 | Close | | | | |
| Teat Length | +0.7 | Long | | | | |



BLITZEN

BARHAM MAXIMUS BLITZEN

Code: 147JE06183

Born: 07/24/2008

DMS: aAa:

Reg. No: USA 000116256694



Sire: SUNSET CANYON MAXIMUS-ET

Dam: BARHAM AD GOLD BLACKIE

MGS: AD GOLD

MGD: JACK MELVIN ROSIE

USDA PTA 04/2010

| | | | | |
|---------------------------|------------|--------|------------|-------|
| TPI | 173 | | | |
| MILK | +689 lbs | 66% R. | dtrs | herds |
| PROTEIN | +37 lbs | +.06% | | |
| FAT | +88 lbs | +.31% | | |
| NM\$ | +494 | | PL | +2.0 |
| CHEESE MERIT | +574 | | SCS | 2.83 |
| Daughter Fertility | -0.2 | | SCR | |

| | | | |
|------------------------------|---|---|-----|
| Sire Calving Ease | % | % | Obs |
| Daughter Calving Ease | % | % | Obs |
| Sire Stillbirth | % | % | Obs |
| Daughter Stillbirth | % | % | Obs |

PA TYPE +0.5 0 Dtrs/ 0 Herds REL 53%

| 04/2010 | | | -2 | -1 | 1 | 2 |
|----------------|------|-----------|----|----|---|---|
| PTAT | +0.5 | | | | | |
| Stature | +0.5 | Tall | | | | |
| Strength | +0.6 | Strong | | | | |
| Dairy Form | +0.4 | Open | | | | |
| Rump Angle | -0.1 | High Pins | | | | |
| Thurl Width | +0.0 | Wide | | | | |
| R. Legs-S View | -0.1 | Posty | | | | |
| Foot Angle | +0.7 | Steep | | | | |
| F. Udder Att. | +0.6 | Strong | | | | |
| R. Udder Ht. | +0.6 | High | | | | |
| R. Udder Wid. | +0.3 | Wide | | | | |
| Udder Cleft | +0.3 | Strong | | | | |
| Udder Depth | +0.7 | Shallow | | | | |
| F. Teat Place | +0.3 | Close | | | | |
| Teat Length | +0.2 | Long | | | | |



BRANSON

GABYS TBONE BRANSON-ET

Code: 147JE06185

Born: 06/01/2009

DMS: aAa:

Reg. No: USA 000116697813



Sire: RICHIES JACE TBONE A364

Dam: GABYS ACTION BABY-ET

MGS: FOREST GLEN AVERY ACTION-ET

MGD: GABYS LEMVIG BARBIE EX-92

2-10 305D 2X 19,470M 5.4% 1042F 3.8% 734P

USDA PTA 04/2010

| | | | | |
|---------------------------|------------|--------|------------|-------|
| TPI | 134 | | | |
| MILK | +271 lbs | 71% R. | dtrs | herds |
| PROTEIN | +21 lbs | + .06% | | |
| FAT | +45 lbs | + .18% | | |
| NM\$ | +351 | | PL | +3.1 |
| CHEESE MERIT | +408 | | SCS | 2.91 |
| Daughter Fertility | -0.2 | | SCR | |

| | | | |
|------------------------------|---|---|-----|
| Sire Calving Ease | % | % | Obs |
| Daughter Calving Ease | % | % | Obs |
| Sire Stillbirth | % | % | Obs |
| Daughter Stillbirth | % | % | Obs |

PA TYPE +1.9 0 Dtrs/ 0 Herds REL 59%

| 04/2010 | | | -2 | -1 | 1 | 2 |
|----------------|------|---------|----|----|---|---|
| PTAT | +1.9 | | | | | |
| Stature | +1.8 | Tall | | | | |
| Strength | +0.8 | Strong | | | | |
| Dairy Form | +1.3 | Open | | | | |
| Rump Angle | +0.5 | Sloped | | | | |
| Thurl Width | +0.7 | Wide | | | | |
| R. Legs-S View | +0.6 | Sickle | | | | |
| Foot Angle | +1.1 | Steep | | | | |
| F. Udder Att. | +2.0 | Strong | | | | |
| R. Udder Ht. | +1.6 | High | | | | |
| R. Udder Wid. | +0.7 | Wide | | | | |
| Udder Cleft | +1.1 | Strong | | | | |
| Udder Depth | +2.1 | Shallow | | | | |
| F. Teat Place | +1.9 | Close | | | | |
| Teat Length | +0.5 | Long | | | | |



DONOVAN

GABYS DALE DONOVAN-ET

Code: 147JE06187

Born: 06/03/2009

DMS: aAa:

Reg. No: USA 000116697868



Sire: OOMSDALE JACE GRATITUDE GARDEN

Dam: GABYS ACTION BABY-ET

MGS: FOREST GLEN AVERY ACTION-ET

MGD: GABYS LEMVIG BARBIE EX-92

2-10 305D 2X 19,470M 5.4% 1042F 3.8% 734P

USDA PTA 04/2010

| | | | | |
|---------------------------|------------|--------|------------|-------|
| TPI | 174 | | | |
| MILK | +1004 lbs | 64% R. | dtrs | herds |
| PROTEIN | +42 lbs | + .02% | | |
| FAT | +59 lbs | + .08% | | |
| NM\$ | +438 | | PL | +3.2 |
| CHEESE MERIT | +496 | | SCS | 2.87 |
| Daughter Fertility | -0.4 | | SCR | |

| | | | |
|------------------------------|---|---|-----|
| Sire Calving Ease | % | % | Obs |
| Daughter Calving Ease | % | % | Obs |
| Sire Stillbirth | % | % | Obs |
| Daughter Stillbirth | % | % | Obs |

PA TYPE +1.0 0 Dtrs/ 0 Herds REL 52%

| 04/2010 | | -2 | -1 | 1 | 2 |
|----------------|-------------|----|----|---|---|
| PTAT | +1.0 | | | | |
| Stature | +0.5 Tall | | | | |
| Strength | +0.9 Strong | | | | |
| Dairy Form | +0.9 Open | | | | |
| Rump Angle | +0.2 Sloped | | | | |
| Thurl Width | +0.7 Wide | | | | |
| R. Legs-S View | +0.3 Sickle | | | | |
| Foot Angle | +0.2 Steep | | | | |
| F. Udder Att. | +0.3 Strong | | | | |
| R. Udder Ht. | +1.1 High | | | | |
| R. Udder Wid. | +1.1 Wide | | | | |
| Udder Cleft | +0.8 Strong | | | | |
| Udder Depth | -0.1 Deep | | | | |
| F. Teat Place | +0.2 Close | | | | |
| Teat Length | +0.8 Long | | | | |